

Removing Barriers to the SAT

165,267 STUDENTS*

*Fall 2019



208 SCHOOLS

135 Elementary SCHOOLS

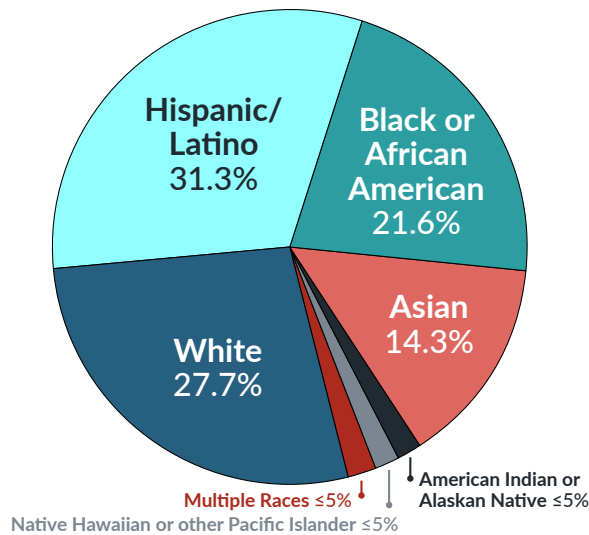
40 Middle SCHOOLS

25 High SCHOOLS

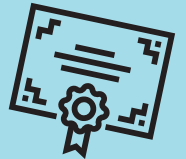
5 Special Schools • 3 Alternative Sites • 2 Early Childhood Learning Centers



Student Demographics 2019-2020



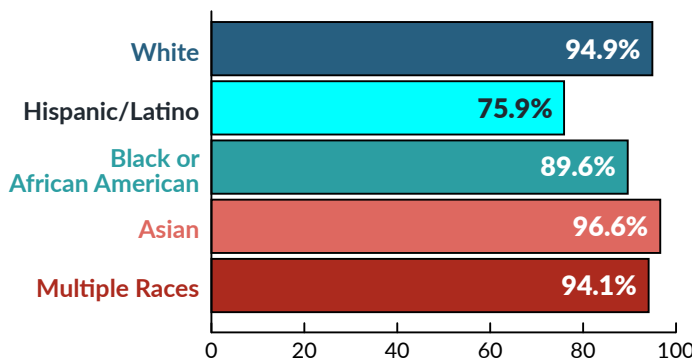
College and Career Readiness



The College and Career Readiness and College Completion Act was passed into law in 2013. The law requires the Maryland State Department of Education, in collaboration with Local Education Agencies (LEAs) and Institutions of Higher Education (IHEs), to determine whether students, no later than the end of 11th grade, are ready for college-level credit-bearing course work in English Language Arts, literacy and mathematics. The law specifically addresses the need for this collaborative group to determine the college placement examinations to be used to make this determination. Additionally, the law states that students who are not determined as college and career ready will enroll in "transition courses or other instructional opportunities" and be reassessed at the end of the 12th grade to determine their status.



2018 MCPS Graduation Rate: Overall 88.4%

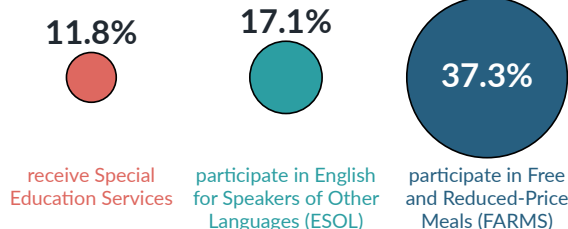


The MCPS overall graduation rate is ABOVE the state and national average.

Largest District in Maryland



Services 2019-2020

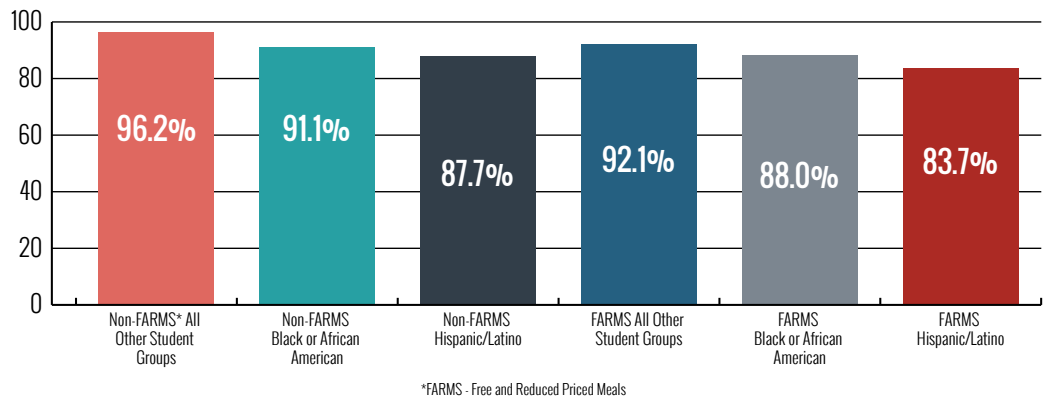


14th Largest School System in the United States



PSAT Participation

138 MCPS students named National Merit Semifinalists in 2018.



Free SAT for Students

In Fiscal Year 2018, as part of a comprehensive strategy to ensure access and opportunity for all students, MCPS began providing every student with the ability to take either the SAT, ACT or a career licensure exam for free. The first class that reflects this new strategy is the class of 2019.

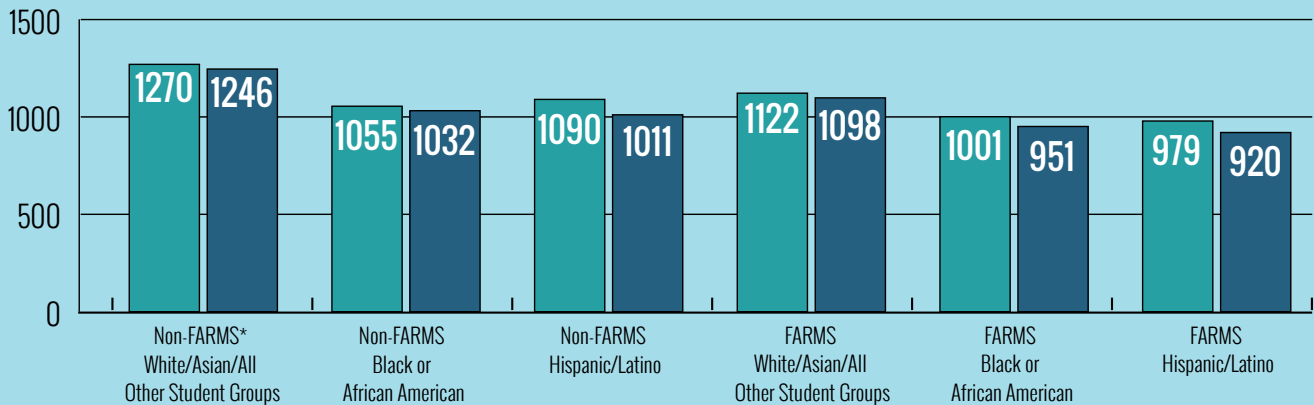
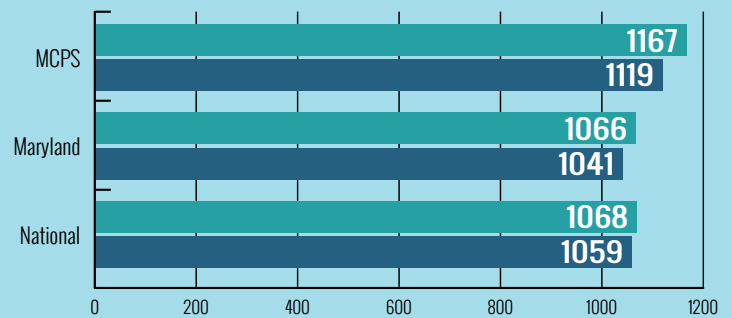
SAT Participation and Performance

Number and Percentage of MCPS Graduates in the Classes of 2018 and 2019 Who Took Redesigned SAT by Focus Group

	N Took SAT		% Took SAT		Difference
	2018	2019	2018	2019	
Non-FARMS White/Asian/All Other Student Groups	3,819	4,163	74.1	78.6	4.5
Non-FARMS Black or African American	1,075	1,152	73.2	82.2	9.0
Non-FARMS Hispanic/Latino	775	1,067	52.5	64.8	12.3
FARMS White/Asian/All Other Student Groups	296	372	66.4	82.5	16.1
FARMS Black or African American	609	796	64.2	79.5	15.3
FARMS Hispanic/Latino	549	853	40.9	64.7	23.8

Average SAT Total Score

CLASS OF 2018 CLASS OF 2019



*FARMS - Free and Reduced Priced Meals